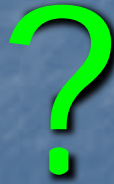


Raise Your Attendance, -Raise your Chances!

What does "***Good attendance***"
mean?



- Do you know what your attendance is?
- Do you know what it means?



This is Simon. He is in Year 7 and has of 90% attendance.

- Is that good?
- What does this mean?



Simon thinks this is pretty good, so do his parents. Are they right?

90% attendance = **1/2 day missed**
every week!!

(Would your boss like you to be off work this much??). That's practically part time!



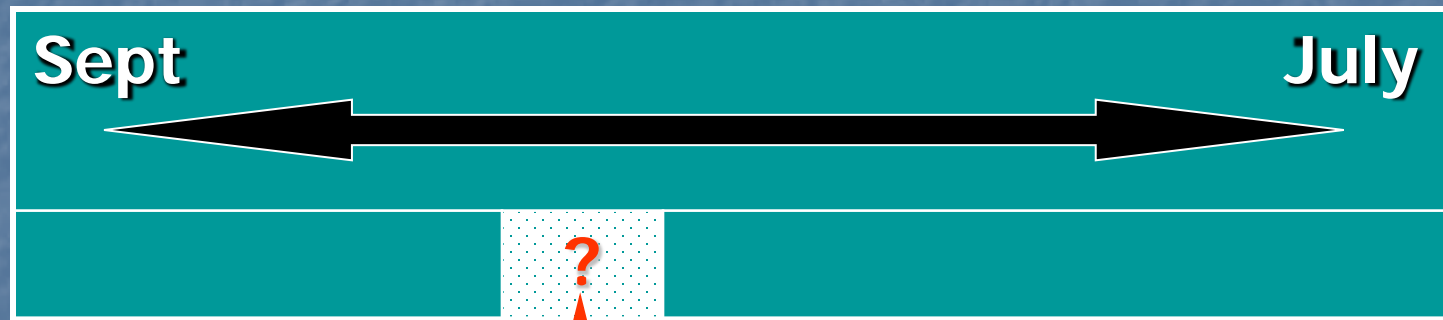
Mon	Tue	Wed	Thur	Fri
		?		

Absent half a day every week

Lets looks a little closer.....

1 school year at **90%** attendance = **4** whole weeks of lessons **MISSED!!!**

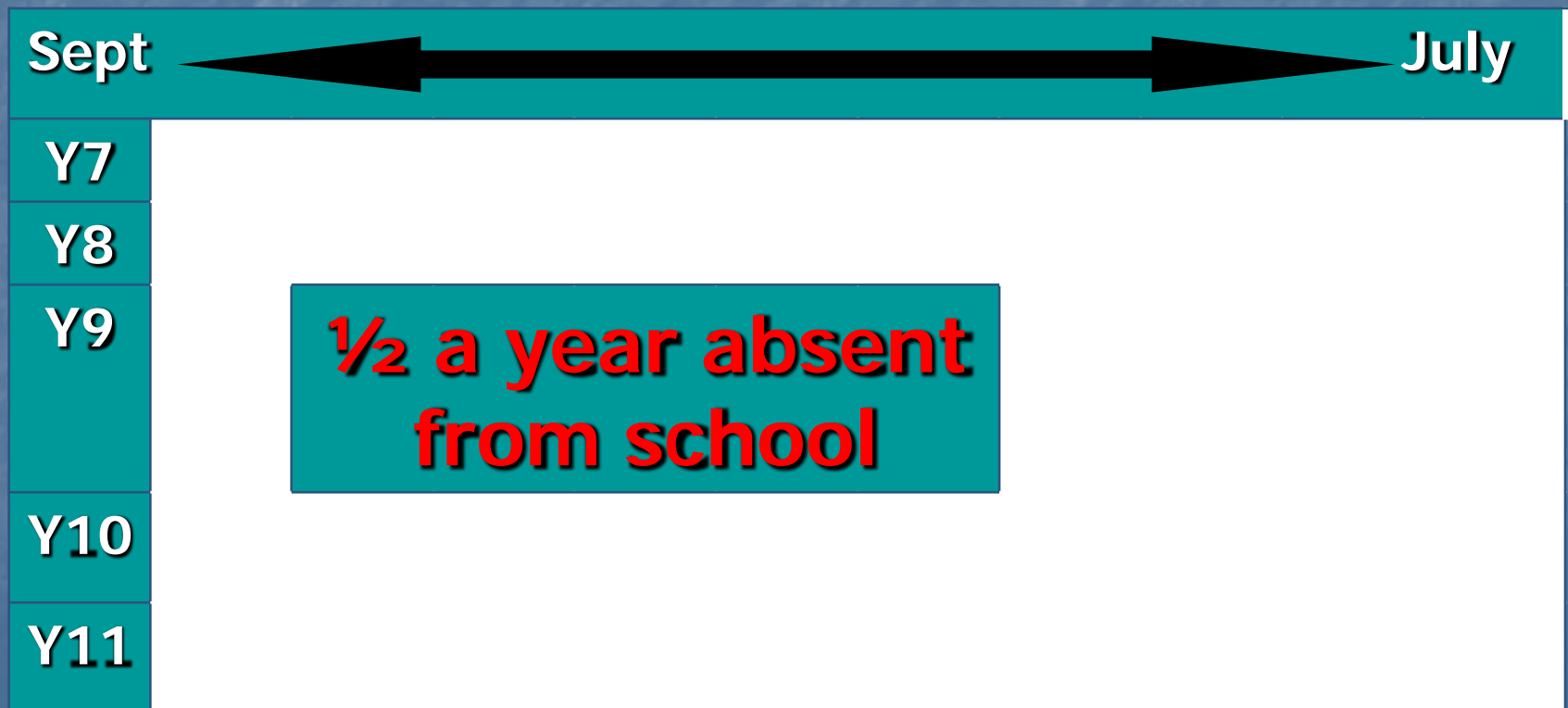
38 school weeks



Absent for 4 weeks

90% attendance over **5** years of secondary school....

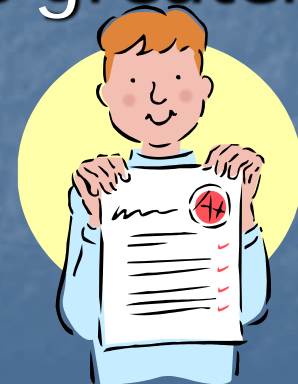
= $\frac{1}{2}$ a school **year missed!**



What impact might this have on
Simon's life.....?

Research suggests that **17 missed
school days** a year = GCSE grade
DROP in achievement. (DfES)

The greater the attendance the greater the
achievement.



Percentage Attendance Weekly

- 90% = 1/2 day
- 80% = 1 day
- 70% = 1 1/2 days
- 60% = 2 days
- 50% = 2 1/2 days
- 40% = 3 days
- 30% = 3 1/2 days

Percentage Attendance Termly/Yearly

■ 90%	=	1 week 2 days	=	4 weeks
■ 80%	=	2 weeks 4 days	=	8 weeks
■ 70%	=	4 weeks 1 day	=	12 weeks
■ 60%	=	5 weeks 3 days	=	16 weeks
■ 50%	=	7 weeks	=	20 weeks
■ 40%	=	8 weeks 2 days	=	24 weeks
■ 30%	=	9 weeks 1 day	=	28 weeks

Percentage Attendance by Yr 11

- 90% = 20 weeks = 1 ½ TERMS
- 80% = 40 weeks = 1 YEAR
- 70% = 60 weeks = 1 ½ YEARS
- 60% = 80 weeks = 2 YEARS
- 50% = 100 weeks = 2 ½ YEARS

What could Simon's potential earnings look like?



What do you want for your life?

Grades = £

- Pupils leaving with 5A's at GCSE, over a lifetime, will earn £350,000 more than those leaving with 5C's

So **90%** is **not** as good as it first
seemed.



So how can we help?

- Rewards for attendance:
 - Every day you attend school with the correct equipment and then don't get sent to the Behaviour centre, you get a vivo – that's 5 per week, just for turning up
 - 100% club
 - Something new...

Tutor Group Checking Yr 7

	Number of Students	Attendance	Average Attendance	RANK
7G1	30	1749	58	3
7G2	29	1686	58	4
7G3	27	1579	58	2
7G4	22	1236	56	11
7G5	24	1352	56	10
7P1	30	1742	58	5
7P2	28	1654	59	1
7P3	26	1507	58	6
7P4	21	1192	57	9
7P5	22	1271	58	7
7W	16	858	54	12
7R	15	861	57	8

Tutor Group Checking Yr 8

Tutor Group	Number of Students	Attendance	Average Attendance	RANK
8G1	29	1643	56.7	3
8G2	30	1730	57.7	2
8G3	27	1524	56.4	5
8G4	24	1332	55.5	8
8G5	16	838	52.4	11
8G6	11	613	55.7	7
8P1	30	1748	58.3	1
8P2	29	1636	56.4	6
8P3	28	1527	54.5	9
8P4	21	1189	56.6	4
8P5	17	854	50.2	12
8W	12	638	53.2	10

Tutor Group Checking Yr 9

Tutor Group	Number of Students	Attendance	Average Attendance	RANK
9G1	25	1434	57.4	3
9G2	24	1353	56.4	4
9G3	22	1262	57.4	2
9G4	21	1182	56.3	5
9G5	19	1055	55.5	7
9G6	16	889	55.6	6
9P1	24	1394	58.1	1
9P2	26	1432	55.1	9
9P3	29	1542	53.2	11
9P4	20	1084	54.2	10
9P5	20	1109	55.5	8

Tutor Group Checking Yr 10

Tutor Group	Number of Students	Attendance	Average Attendance	RANK
10E1	29	1633	56.3	2
10E2	25	1401	56.0	5
10E3	25	1407	56.3	3
10M1	22	1126	51.2	8
10M2	17	983	57.8	1
10M3	25	1352	54.1	6
10V1	17	910	53.5	7
10V2	16	900	56.3	4

Tutor Group Checking Yr 11

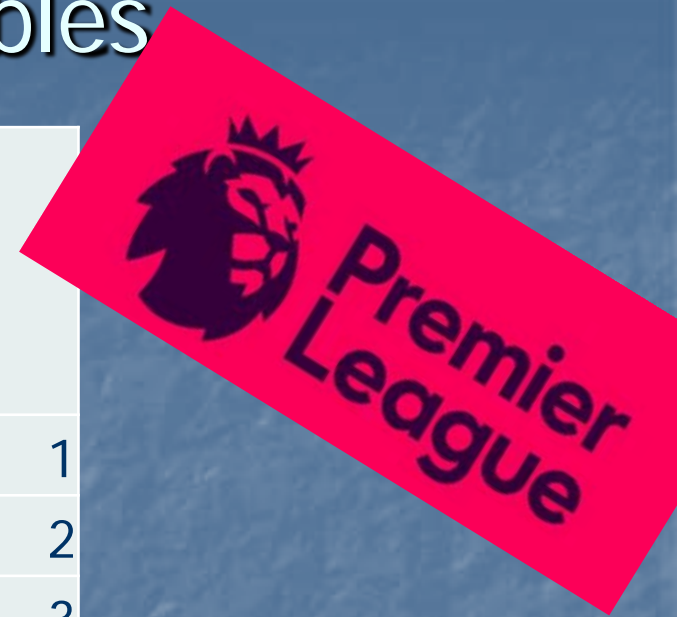
Tutor Group	Number of Students	Attendance	Average Attendance	RANK
11E1	22	1230	55.9	6
11E2	24	1379	57.5	4
11E3	21	1193	56.8	5
11M1	22	1210	55.0	8
11M2	21	1245	59.3	2
11M3	12	729	60.8	1
11V1	11	637	57.9	3
11V2	19	1058	55.7	7

So what does that mean???

- If you rank number 1 then you will be first in the dinner queue!
- You will need to show your uniform cards in order to be allowed to be front of the queue
- If you've lost your uniform cards then you lose the right to move to the front of the queue

Overall League Tables

	Number of Students	Attendance	Average Attendance	RANK	Total Rank
11M3	12	729	60.75	1	1
11M2	21	1245	59.29	2	2
7P2	28	1654	59.07	1	3
7G3	27	1579	58.48	2	4
7G1	30	1749	58.3	3	5
8P1	30	1748	58.27	1	6
7G2	29	1686	58.14	4	7
9P1	24	1394	58.08	1	8
7P1	30	1742	58.07	5	9
7P3	26	1507	57.96	6	10
11V1	11	637	57.91	3	11



There are 4 leagues – which one will your tutor group be in???

Attend and Achieve!

- If a school can **improve** attendance by **1%**, they will see a **5-6%** improvement in **attainment**. (Department for Education and Skills)
- Please **help** us and **yourself** by ensuring their attendance remains above **95%**, allowing you to **achieve** your potential.



**Every Lesson
Counts....**