



# WELCOME TO PAIGNTON ACADEMY



## YEAR 7 TUTOR WELCOME

*Community*

*Ambition*

*Relationships*

*Excellence*



## BROADSANDS HOUSE

*Community*

*Ambition*

*Relationships*

*Excellence*



# WE ARE BROADSANDS

---

 **Attitude**

---

**Resilience** 

---

 **Kindness**

## Our motto

**Attitude** - being a focal point, utilising older pupils as role models.

**Resilience** - a key underlying theme. Aims to generate a greater sense of self-belief within pupils.

**Kindness** - creating a culture of care and empathy, within and outside of school.







## ELBERRY HOUSE



# The Elberry Ethos

**Respect** - among peers and adults in school and society

**Resilience** - generate a greater sense of self-belief

**Reward** - working hard to achieve personal goals



## GOODRINGTON HOUSE

*Community*

*Ambition*

*Relationships*

*Excellence*





# Goodrington House

EST:2019

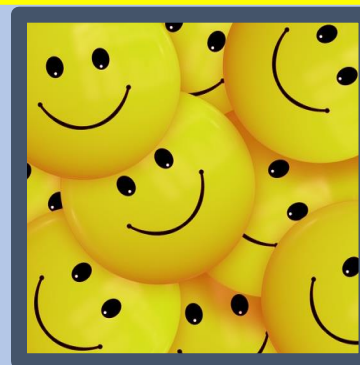


Will you apply our motto throughout the year?

**LIVE** - Show resilience and do your very best

**LAUGH** - Enjoy school and keep improving

**LEARN** - Develop knowledge and embrace challenges



Community

Ambition

Relationships

Excellence



## PRESTON HOUSE

*Community*

*Ambition*

*Relationships*

*Excellence*





## Preston House Ethos

**HONESTY** - being honest in all our endeavours, focusing on always trying our best.

**COURAGE** - Having the courage to 'have a go' and build on our self-belief and ambition.

**GENEROSITY** – being a part of Paignton Academy community and beyond. Being a kind, caring and empathetic citizen.

*Community*

*Ambition*

*Relationships*

*Excellence*



# BOROUGH ROAD CENTRE TUTOR GROUPS YEAR 7



Broadsands

7BB1



Mr Lewis  
DJL

Elberry

7BE1



Mrs Vinay  
JEV

7BE2



Mr Smith  
AMS

Goodrington

7BG1



Miss Julian  
KJW

7BG2



Miss Duffin  
KXD

Preston

7BP1



Miss Peter  
CHP



# WATERLEAT ROAD CENTRE TUTOR GROUPS YEAR 7



Broadsands

7WB1



Miss McNulty  
EXM

Elberry

7WE1



Mrs Veale  
REV

7WE2



Miss Karak  
IXK

Goodrington

7WG1



Mrs Dale  
SHD

7WG2



Miss Cislund  
LXC

Preston

7WP1



Mrs Boons  
TES





# SUCCESSFUL LEARNING



*Community*

*Ambition*

*Relationships*

*Excellence*





# MAKE NEW FRIENDS



*Community*


*Ambition*

*Relationships*

*Excellence*



# INDUCTION DAYS 3rd & 4<sup>TH</sup> JULY

A chance to meet staff  
Opportunity to make new friends  
Experience different lessons  
Become familiar  with the site

**Thursday 3rd July - 8.20am to 2.45pm (Primary Uniform)**

**Friday 4<sup>th</sup> July - 8.20am to 2.45pm (Primary PE kit)**





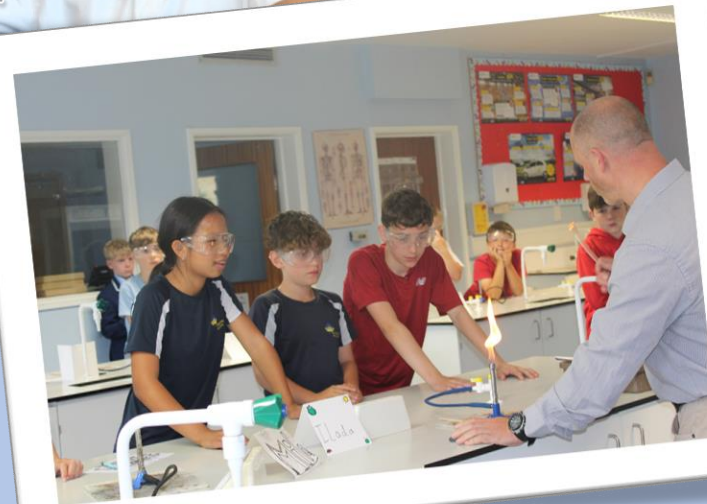
# WATERLEAT ROAD ENTRANCE







# INDUCTION DAYS 3rd & 4<sup>TH</sup> JULY



- Excellence for All
- Character
- Ambition
- Outstanding Relationships
- Community
- Love of Learning
- Pride





# VARIETY OF 5 LESSONS A DAY



Community

Ambition

Relationships

Excellence




# SCHOOL DAY

8:30am-9:10am -

TUTOR TIME

9:10am-10:10am -  
10:10am-11:10am -

PERIOD 1  
PERIOD 2

11:10am-11:30am 

BREAK

11:30am-12.30pm -  
12:30pm-1:30pm -

PERIOD 3  
PERIOD 4

1:30pm-2:00pm -

LUNCH

2:00pm-3:00pm-

PERIOD 5





# LIBRARY – FREE TOAST BEFORE SCHOOL OPEN AT BREAK, LUNCH & AFTER SCHOOL



*Community*

*Ambition*

*Relationships*

*Excellence*

# FOOD CHOICES – INNOVATE CATERING TEAM

## Choices

- 1) Bring a Packed lunch
- 2) Buy food in the canteen
- 3) A bit of both (snack and money)

FSM allowance will be £2.90 a day in September.

Students should bring **cash** for induction days.

We will give parents online log ins in September so they can load money on to purchase school lunches from September.







# INDUCTION DAY MENU



## Menu on Induction Days

Beef Burger or Vegetarian Hotdog  
Wedges & Coleslaw  
peas or baked beans

Cake,  or Jelly  
\*\*\*\*\*

Fish & Chips with beans or peas  
Vegetable Fingers & Chips, with beans or peas

Cake, Fruit or Jelly

\*\*\*\*\*

Meal of the Day £2.25  
Meal of the Day and Dessert £2.70  
Free Meal Allowance £2.70  
Drinks from 70p



Community

Ambition

Relationships

Excellence





# CLASSCHARTS

COVID-19/HOME LEARNING CENTRE


PRIMARY SECONDARY CONTACT US ENGLISH (UK)

ClassCharts Part of tes AWARDS 2019 AWARDS 2017

FEATURES LOGIN [REQUEST YOUR DEMO](#)

**Plan ahead: Seating Plans and effective behaviour management will help keep pupils and staff safe**

Save teachers time & reduce workload with our data rich seating plans. Improve pupil behaviour with our fast and effective behaviour management tools.



Community

Ambition

Relationships

Excellence



# CLASSCHARTS

We will celebrate students success at every opportunity. Students will be rewarded for,



7 Core Values



Reading



Home Learning



Attended Study Club



Buddy



Open Evening Help



House Ethos Reward



1st place in House Competition



2nd place in House competition



3rd Place in House competition



Entered house competition

*Community*


*Ambition*

*Relationships*

*Excellence*




ASAP



## ACADEMY RULES



- Arrive to all your lessons on time with the correct equipment (within 3 minutes of the bell)
- Follow all instructions given by adults
- Succeed through Active listening (ASAP)



**A**ttention  
to the speaker





**S**it up  
straight



**A**rms  
on Table



**P**ens  
down

Community

Ambition

Relationships

Excellence





# Learning Modes

BELIEVE AND ACHIEVE



## Respectful Whole Class



## Silent Independent



## Polite Shared Learning

- Excellence for All
- Character
- Ambition
- Outstanding Relationships
- Community
- Love of Learning
- Pride



# SPARX MATHS

- We use an online website called **Sparx** for Maths.
- Homework is set every week and follows exactly what students do in class.
- Maths homework is set on a Friday to be completed by the following Friday
- It is due every week, if students are stuck, we run a homework help club.



## Why do we set homework?

- We are teaching students to be independent.
- We are backing up and practicing class work
- A student who completes all their work will be....  
...40 hours ahead of students who don't!

**sparx**

**Maths. Reimagined.**

[www.sparx.co.uk](http://www.sparx.co.uk)

*Community*

*Ambition*

*Relationships*

*Excellence*



## SPARX READER

- Sparx **Reader** is our chosen reading platform and will be accessed during the school day and within English curriculum time.
- Students are encouraged to continue reading **away from school** and are incentivised by rewards to do so!
- We do have a stocked library at both WRC and BRC and students are also very welcome to borrow books from there to foster their love of reading.
- Developing their reading ability is the most impactful step students can do to improve life chances

**sparx**

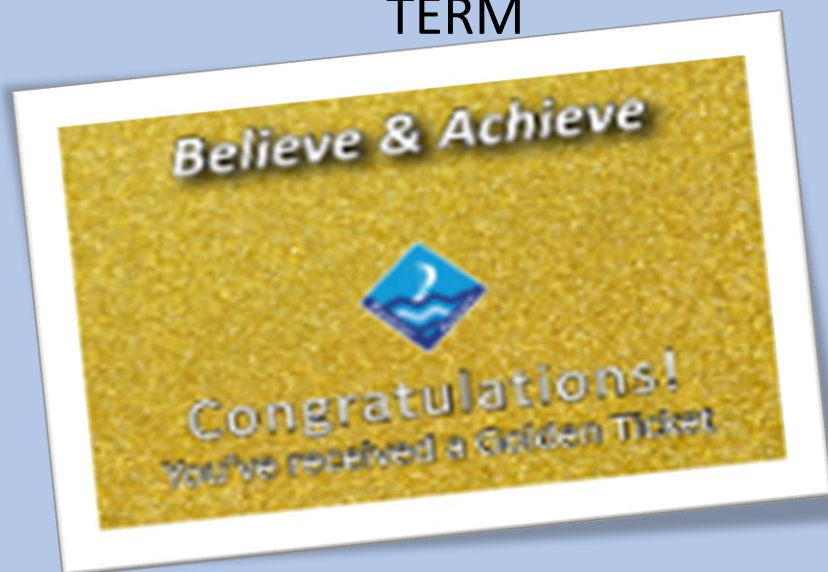
**Maths. Reimagined.**

[www.sparx.co.uk](http://www.sparx.co.uk)



# Golden Ticket Draw!!

5 TICKETS TO BE DRAWN EACH TERM



## Summer GOLDEN TICKET DRAW

CHECK OUT THE FANTASTIC PRIZES AVAILABLE AT THE BELIEVE & ACHIEVE REWARDS ASSEMBLY!

INCLUDING THE GOLDEN TICKET RAFFLE. REMEMBER TO KEEP YOUR TICKET SAFE AND SUBMIT IT TO THE HOUSE OFFICE OR BRING IT ON ASSEMBLY DAY.

### WIN!

- 2 x Paddleboards
- 10 x Nerf Super Soaker
- 4 x Selfie Ring Lights
- 4 x 10M LED Strip Lights
- 6 x Wireless Ear Buds
- 4 x Two Bare Feet 44" Body Boards
- 4 x Ortizan Bluetooth Speaker
- 2 x 2hr Paddleboard Activity Voucher
- 2 x 2hr Kayak Activity Voucher
- 8 x Voucher for a round of golf
- 9 x Splashdown Vouchers
- 2 x Cinema Vouchers

# HIGH ATTENDANCE REWARDS





# ABSENCE COMMUNICATION

Absence

Please notify the Academy before 8:20am

Please call our attendance officer

**BRC - 01803 403721**

**WRC - 01803 403602**

Or email via

**[attendance@paigntonacademy.tsat.uk](mailto:attendance@paigntonacademy.tsat.uk)**

*Community*

*Ambition*

*Relationships*

*Excellence*





# UNIFORM – PROSERVE SUPPLIER ON WEBSITE

OPENING TIMES Monday, Tuesday, Wednesday & Thursday 9am-5pm - Fridays 9am-4pm CLOSED BANK HOLIDAYS



Account | Wishlist (0) |

SCHOOL UNIFORM PRIMARY & SECONDARY ▾ CLUBS ▾ SPORTS/PE EQUIPMENT ▾ PROMOTIONAL CLOTHING ▾

SEARCH

## PAIGNTON ACADEMY

Home > Paignton Academy



SORT BY:

Relevance ▾



25 Products



PAIGNTON ACADEMY BOYS BLAZER  
COMPULSORY



£31.50



PAIGNTON ACADEMY GIRLS BLAZER  
COMPULSORY



£31.50



PAIGNTON ACADEMY TIE  
COMPULSORY



£7.00



PAIGNTON ACADEMY STRAIGHT  
SKIRT COMPULSORY



£18.25

# PE KIT

## P.E. Kit - BOYS



## P.E. Kit - GIRLS



Football/Rugby Boots - we recommend round moulded football studs because metal studs and moulded blades are not allowed on the astro turf.

Boots with round moulded studs can be used on the astro turf and the field.

Any boots can be used on the field.

# NEW ASTRO SURFACE

The Astro is being re-laid in the summer with a new surface.

To preserve the surface, it is recommended that round moulded Football boots are the only Footwear allowed on the astro.

Trainers would push down and flatten the carpet. More information will follow from the PE team.







# UNIFORM EXPECTATIONS

Ties must be clipped on and top button done up on shirt.

Shirts must be tucked in at all times.

No hoodies/jumpers are to be worn under or over blazers.

Pupils can wear a coat over the blazer but not instead of it.

A school jumper is an optional extra for winter, not instead of a blazer

All students require Black shoes & black socks

# SCHOOL UNIFORM LABEL EVERYTHING



Uniform Swap  
shop

Waterleat Road  
Entrance on Top  
Road

Tuesdays  
3pm – 3:45pm

# MOBILE PHONES




OFF & AWAY EVERYDAY





# EQUIPMENT

## COMPULSARY

- Adequate school Bag
- 2 Pens (Black or blue)
- Pencil
- Rubber
- Ruler
- Purple Pen 
- Scientific Calculator (we recommend a Casio FX83)

## DESIRABLE

- Colouring pencils
- Protractor
- Glue Stick

# AUDITION FOR THE SHOW



*Community*

*Ambition*

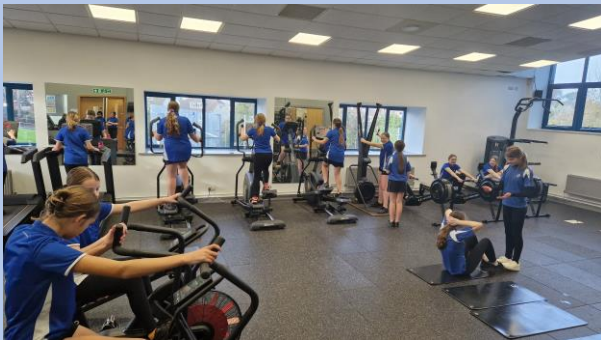
*Relationships*

*Excellence*





# ENCOURAGE YOUR CHILD TO ATTEND ANY OF FREE OUR CLUBS



*Community*

*Ambition*

*Relationships*

*Excellence*





# STUDENTS CAN ACCESS CLUBS ON BOTH SITES



*Community*

*Ambition*

*Relationships*

*Excellence*





# ALL ABILITIES ARE WELCOME



*Community*

*Ambition*

*Relationships*

*Excellence*





# APPLY TO BE A SPORTS LEADER



*Community*

*Ambition*

*Relationships*

*Excellence*





# APPLY TO BE THE FORM CAPTAIN



*Community*

*Ambition*

*Relationships*

*Excellence*

## BIKEABILITY LEVEL 2 & LEVEL 3







# COMMUNICATION

## Borough Road

Contact details – (01803) 403003

[brdadmin@paigntonacademy.tsat.uk](mailto:brdadmin@paigntonacademy.tsat.uk)



## Waterleat Road

Contact details – (01803) 403005

[wrdadmin@paigntonacademy.tsat.uk](mailto:wrdadmin@paigntonacademy.tsat.uk)





# HOUSE TEAM CONTACTS

## Waterleat Road Pastoral Team

Broadsands - [wrcbroadsands@paigntonacademy.tsat.uk](mailto:wrcbroadsands@paigntonacademy.tsat.uk)

**Elberry** – [wrcelberry@paigntonacademy.tsat.uk](mailto:wrcelberry@paigntonacademy.tsat.uk)

**Goodrington** – [wrcgoodrington@paigntonacademy.tsat.uk](mailto:wrcgoodrington@paigntonacademy.tsat.uk)

**Preston** – [wrcpreston@paigntonacademy.tsat.uk](mailto:wrcpreston@paigntonacademy.tsat.uk)



## Borough Road Pastoral Team

Broadsands - [brcbroadsands@paigntonacademy.tsat.uk](mailto:brcbroadsands@paigntonacademy.tsat.uk)

**Elberry** – [brcelberry@paigntonacademy.tsat.uk](mailto:brcelberry@paigntonacademy.tsat.uk)

**Goodrington** – [brcgoodrington@paigntonacademy.tsat.uk](mailto:brcgoodrington@paigntonacademy.tsat.uk)

**Preston** – [brcpreston@paigntonacademy.tsat.uk](mailto:brcpreston@paigntonacademy.tsat.uk)



THANK YOU FOR LISTENING



ANY QUESTIONS?

*Community*

*Ambition*

*Relationships*

*Excellence*